



Signing Naturally Interactive Online Student Materials: How-To for Students

Table of Contents

| | |
|--|------------------|
| <u>HOW TO ENTER YOUR ACCESS CODE</u> | <u>2</u> |
| <u>FOR YOUR INFORMATION – HOW TO NAVIGATE THROUGH THE ASSIGNMENTS</u> | <u>5</u> |
| <u>FREQUENTLY ASKED QUESTIONS</u> | <u>11</u> |
| <u>KEYWORDS</u> | <u>13</u> |




How To Enter Your Access Code

To see a video of steps 1 – 3, click [here](#).

The first time you access Signing Naturally online student materials in your ASL course, you'll need to enter your code. You will only need to follow steps 1-3 once; once completed, you will be able to access all of your assignments without needing to enter your code again.

1. In this example, the Assignment name is "Describe Something, Ask What's it Called" Your teacher may have chosen a different name. Click on "Enter Signing Naturally 13, 14 and The Ball Story Access Code"

Describe Something, Ask What's It Called

 [Enter Signing Naturally 13, 14 and The Ball Story Access Code](#)



2. You will then see a text box where you can enter your access code, and then click Submit. Be sure to enter your access code exactly as it is written. ****NOTE:** If you copy and paste your access code, please be careful not to include extra characters such as spaces which will cause an error message when entering**

Signing Naturally - Homework 13:1 / Enter Signing Naturally 13, 14 and The Ball Story Access Code

Enter Signing Naturally 13, 14 and The Ball Story Access Code

This course requires the purchase of an access code. Please enter your Signing Naturally 13, 14, and The Ball Story Access Code below.


Note: If you do not have an access code for Signing Naturally 13, 14, and The Ball Story, please click [here](#) to purchase.

Signing Naturally 13, 14, and TBS Access Code

3. Once you click submit, you will see a green box saying that “Your changes have been saved successfully!”. You can then proceed to click the homework link and begin your assignment.

Your changes have been saved successfully!

Describe Something, Ask What's It Called

 Homework 13:1



4. Once you have successfully saved your access code, you will not need to enter it again. Your account is accessed through your LMS (such as Canvas, Blackboard, Moodle, D2L, etc). If you somehow navigate to a log-in screen and are prompted to enter a password – STOP and log out of your LMS and then log back in. Select your ASL course again to access the assignments as usual. There is no need to reset your password, as that log-in screen is not associated with your account.

ATTENTION - IMPORTANT NOTE: If you've previously taken a course in which you used the Interactive Online Student Materials, and then dropped out of the course and are now re-taking the course at a different time, PLEASE email support@dawnsign.com to have your profile deleted. If your profile is not deleted, your grades will not sync to the gradebook properly, and you will end up having to redo the assignments.

Continue to the next page for some tips on how to navigate within the assignment/homework.



For Your Information – How to Navigate Through the Assignments

- Each time you open a Homework, you will need to click the Start button.

SIGNING *Naturally*

Vocabulary review

Homework 13:1

Describe Something,
Ask What It's Called


START

- You will need to click on “NEXT” or the > key to proceed through the Homework.

CONVERSATION 1

Vocabulary review

Observe how in each conversation Signer A, begins by describing the salient features of the item and adds information only when the listener indicates more information is needed.



00:00 / 00:30
🔊
⏮
⏪
⏩
🗄

Signer A: describe item, ask what it is called

- name category
- describe salient features

Signer B: ask for clarification or add description to confirm

A: clarify or add information

B: give name

In this conversation, Tommy describes a shirt and asks Renate what it's called. After further clarification, Renate is able to tell Tommy what it's called. (Henley shirt)

SIGNING *Naturally*

Homework 13:1

PAGE 2/70

⚙
🗄
< PREV

NEXT >

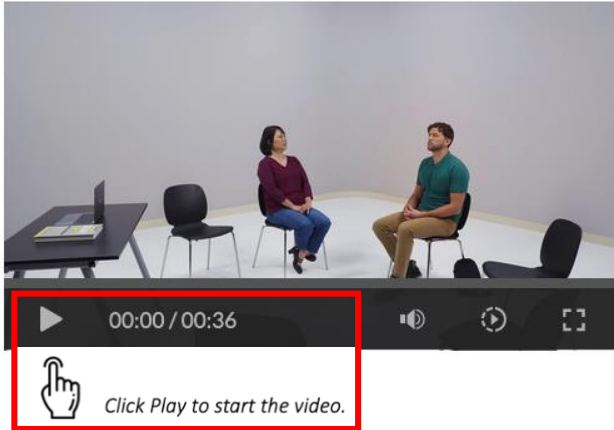
- The Homework will vary. Some are simply reading materials, and you just need to proceed through the Homework and then click “submit” at the end.
- Other Homework will include multiple-choice questions, short answer (text box), select the photo, and so on. Be sure to click submit after each answer selected.

- Sometimes, videos do not auto-play - you will need to click the “Play” button to start the video. Some questions/slides will have a video that will auto-play.

CONVERSATION 2

Vocabulary review

Observe how in each conversation Signer A, begins by describing the salient features of the item and adds information only when the listener indicates more information is needed.



Signer A: describe item, ask what it is called

- name category
- describe salient features

Signer B: ask for clarification or add description to confirm

- A: clarify or add information
- B: give name

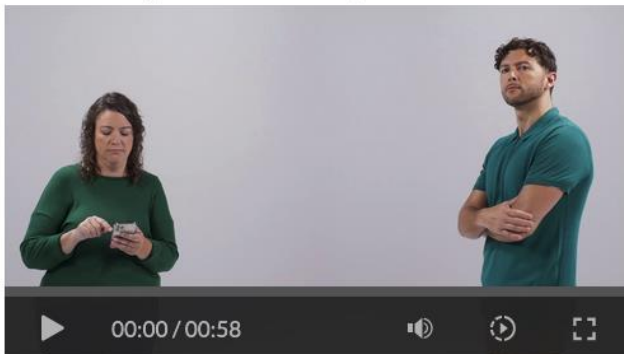
In this conversation, Tommy describes a type of pose and asks Iva what it's called. After further clarification, Iva is able to tell Tommy what it's called.

- Your teacher may ask you to record the page numbers of your incorrect answers. The page number can be found on the right side of the green bar on the bottom of the “box”. In this example, the page number is 15 out of 70 (15/70).

COMPREHENSION ACTIVITY – MINIDIALOGUE 1

Vocabulary review

View the dialogue and answer the questions.



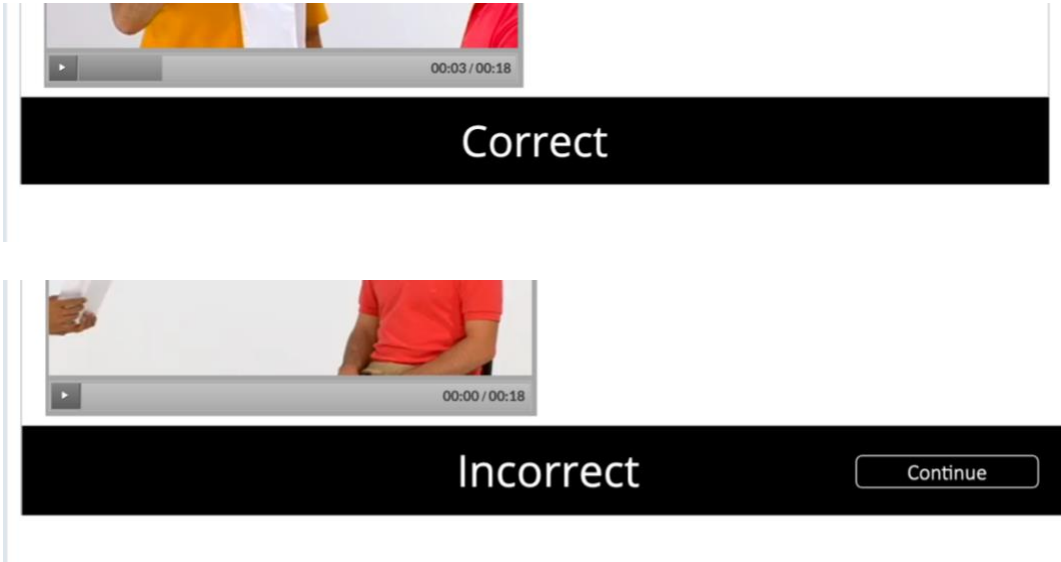
QUESTION 1/3

What text did Melinda receive and from whom?

- a text about weightlifting lift; didn't specify from who
- a text about an exercise to practice; from gym
- a text about an exercise to practice; from trainer
- none of the above



- You will see a black bar appear in the bottom of the screen each time you submit an answer that will let you know whether your answer was correct or incorrect.



- Some assignments have Vocabulary Review included. To find the Vocabulary Review, click on the words “Vocabulary Review” on the top-right corner of your assignment at any time before, during, or after completing the assignment. If there is no “Vocabulary Review” visible in the top-right corner, that means that particular assignment does not have any vocabulary words included.



Here is a full list of which assignments have VR included.

| | |
|---------|---|
| Unit 13 | 13.1, 13.9, 13.10, 13.11, 13.13 |
| Unit 14 | 14.1, 14.2, 14.3, 14.4, 14.5, 14.6, 14.7, 14.8, 14.9, 14.11 |
| Unit 18 | 18.1 |



- Signing Naturally has two types of activities, Reading Only and Question and Answer.
 - **Reading Only**
A Reading Only activity is finished when you see the Homework Complete page.
 - **Question and Answer**
A Question and Answer activity gives you the option to 'Retry' or 'Continue'.
Retry allows you to answer all of the questions again.
Continue takes you to the Homework Complete page.

QUIZ RESULTS



Well done!

| | |
|----------------|-------|
| Your Score: | 93.1% |
| Passing Score: | 80% |

RETRY

CONTINUE

SIGNING *Naturally*

Homework 13:2

PAGE 38/39

TWO THINGS OF NOTE:

1. If you click "RETRY", you MUST complete the assignment again, as your first attempt will not be reported to the gradebook. If you click "RETRY" and then quit the assignment, your score at the time of quitting the assignment is what will be reported to the gradebook.
2. If you receive a grade above 80% and then click the "Continue" button, any subsequent re-attempts will not be reported to the gradebook. Scores above 80% are considered a pass. If you receive a score higher than 80% but still want to try for a higher score, you must immediately hit the "Retry" button and then complete the entire assignment again.



Frequently Asked Questions

Q: Where do I purchase my access codes?

A: You can check to see if your bookstore has them in stock or go to www.dawnsign.com/store to purchase your access code.

Q: How do I know which materials to buy?

A: please confirm with your teacher if you are not sure which type of materials you need.

Q: What if I buy the wrong product? Can I get a refund?

A: *Signing Naturally Interactive Online Student Materials* codes can be refunded within five business days of the initial order date; please email contactus@dawnsign.com with your request or call us at 858-625-0600

Q: Do I need a code for the online video library too?

A: No. All necessary materials will be available within your course that your teacher has set up. You will not need to use our website nor the online video library.

Q: How do I know which access code I have?

A: Access codes for *Signing Naturally Interactive Online Student Materials* are ten characters long. If you've purchased directly from us, you will receive an email receipt after checkout that will include the code.

If you've purchased from your school bookstore, please check in with them how they provide the codes. This code will only be used within your ASL course.

Online video library codes are 12 characters long. These access codes are only found in the back of physical books inside the DVD sleeve. Any new copies, either from us or from a third party, will have a scratch-off card that contains the code. The online video library code is only redeemable on our website.

If a used book was purchased, the online video library access code has most likely been used. If the DVDs are present, they can be used, or you may purchase a subscription to the online video library at <https://www.dawnsign.com/register>.

Q: My code is not working. What do I do?

A: *Signing Naturally Interactive Online Student Materials* codes are only to be used within your school LMS, if you are having problems there, please take a screenshot and share it with us at contactus@dawnsign.com to help us determine the issue and how best to resolve it.

Online video library codes are only used on our website. Please send proof of purchase and a picture of your card with the code showing to contactus@dawnsign.com and we would be happy to provide a new online video library code.



Q: My password is not working. What do I do?

A: If you are having password issues with your school's LMS, please contact your school's IT or technical support team for help.

If you are having password issues with our website, please email contactus@dawnsign.com or call us at **858-625-0600** to let us know which email you used to log into our website, and we will help troubleshoot the password issue.

Q: How often can I retake my assignments?

A: At the end of each 'Graded' Homework, you have the option to 'Retry' or 'Continue'.

If you click 'Continue', and your score is above 80%, that grade will post to the LMS grade book and will be your final grade for that Homework. If you take the Homework again and score a higher or lower grade, no new grade will transfer into the LMS grade book.

If you click 'Continue' and your score is below 80%, that grade will post to the LMS grade book. However, until you score over 80%, your score will not be locked in the LMS gradebook. If you take the Homework again and get a different score, either higher or lower, your score will change.

If you click 'Retry', your grade will continue to change until you score 80% or higher and click 'Continue' from the Your Results page.

NOTE: if your teacher allows you to change your grade to a score higher than 80%, you can send them a screenshot of your grade, and they can then manually change it in your gradebook.

Q: I am getting an error on my school's LMS that has "MISSING_VALIDATION_COOKIE" as you can see in the screenshot?

A: Here are the troubleshooting steps we would like you to take. Please see below for instructions:

-SAFARI: Click Safari in upper left then select Preferences. Then pick privacy and uncheck "Prevent cross-site tracking"

-FIREFOX: Click Firefox in upper left the select Preferences. Pick Privacy & Security and make sure "Standard" is picked for Browser Privacy.

-CHROME: Click Chrome in upper left then select Preferences. Pick Privacy and Security and then pick Cookies and other site data. Select "Allow all cookies" This works for all desktop/laptops browsers.



Q: How long will I have access to the Interactive Online Student Materials?

A: The student access code is good for 12 months after the redemption of the code. You will have access for the duration that your course is available to you. However, if your school's LMS is not set up to allow you to access their courses past the completion date of your class, you will no longer be able to use the *Signing Naturally Interactive Online Student Materials*. Please check with your teacher to see if access is possible past the completion of class.

KEYWORDS

LTI (Learning Tools Interoperability): *An education technology specification developed by the IMS Global Learning Consortium. It specifies a method for a learning system to invoke and to communicate with external systems.*

LMS (Learning Management System): *A software application for the administration, documentation, tracking, reporting, automation, and delivery of educational courses, training programs, or learning and development programs. (Canvas, Blackboard, Moodle, Schoology, D2L (Desire to Learn)/Brightspace).*

IT—Information Technology): *A department that handles anything related to computing technology.*
System Administrator: *A person who manages the operation of the LMS program.*

E-book: *An electronic version of a printed book that can be read on a computer or handheld device designed specifically for this purpose. Our Signing Naturally Interactive Online Student Materials are NOT eBooks!*